



# BAY AREA BARNS AND TRAILS

E D U C A T I O N • S T E W A R D S H I P • P R E S E R V A T I O N

415-383-6283 • FAX 415-381-3809 • e-mail BABtt@earthlink.net • www.bayareabarnsandtrails.org  
PO Box 2435 • Mill Valley, CA 94941-2435

NON-PROFIT ORG  
U. S. POSTAGE  
P A I D  
MILL VALLEY, CA  
PERMIT NO. 11

*"Land...they  
ain't making  
it anymore..."*

-WILL ROGERS



TO:

address correction requested

## To Our Members, Thanks For Your Support...

Dan Alexander, Lyn Allen-Meeker, Alistair Bleifuss, C.A. Bower, Ron Brown, Janet Carpinelli, Cecily Cassel, Sue Conens, Nancy Couperus, Peg Duggan, Electra Foundation, Anita Ergo, Judy Etheridge, Dennis Fluet, Folger Estate Stable Committee, Jo Gardner, Karen Johnson, Deborah Lewis, Jane Anne Erickson, Friends of Westwind Barn, Gail Gallagher, Garrod Farms, Robinn Goldsmith, J. E. Gomes, Kristi Granger, Dorian Hendricks, Barbara Heyward, Lorraine Kainuma, Lauren Kallaway, Gerald King, Melba Leal, Sylvia and Oliver Lednicer, Wanda Moore, Michael Murphy, Donna Nelson, Henrik Olsgaard, J. Przyblyski, Therese Pouliot, Alice Quinn, Jim Real, San Francisco Polo Club, Ellyn Schumacher, Lyngé Simone, Marilyn Terstegge, Nancy & Richard Timmer, Madeleine Todd, Marijanne Visser, Christina Von Vedder, Gretchen Wallerich, Barbara and Leon Weitz, Les, Jordan and Max Wolff.

## Your Support is Very Important!

We hope the enclosed membership envelope will inspire you to **JOIN UP. THANK YOU!**

Please consider donating a SOMETHING EXTRA to help Bay Area Barns and Trails expand programs such as its Equestrian Lands & Trails Stewardship Grants, Capacity Building for "Grassroots" organizations, and Preservation or Acquisition Grants (i.e. Save Alum Rock Stables). You can rest assured that your membership and extra donation will directly help "Save lands and trails for horses in the San Francisco Bay Area."

### Contact Us

We're here to help you and your neighbors protect those special places that horses need. We'd like the opportunity to help you with equestrian land or trail challenges and opportunities in your area. If you believe that public-private partnerships can save equestrian lands here in the Bay Area — please contact Bay Area Barns and Trails at 415.383.6283 or BABTT@earthlink.net

### Directors and Advisors

Deb Adair | SANTA CLARA COUNTY  
Alistair Bleifuss | SONOMA COUNTY  
Nancy Couperus | SANTA CLARA COUNTY  
Bonnie Davis | ALAMEDA COUNTY  
Judy Etheridge | ALAMEDA COUNTY  
Chip Hankins | CONTRA COSTA COUNTY  
Karen Johnson | SAN FRANCISCO  
Maggie Kelly | SANTA CLARA COUNTY  
William Symmes | ALAMEDA COUNTY  
Barbara Weitz | MARIN



# BAY AREA BARNS AND TRAILS

E D U C A T I O N • S T E W A R D S H I P • P R E S E R V A T I O N      F A L L 2 0 0 3

415-383-6283 • FAX 415-381-3809 • e-mail BABtt@earthlink.net • www.bayareabarnsandtrails.org

“ For the sake of our children, grandchildren, and future generations, we need to work hard to preserve these open spaces. The existence of such natural, undeveloped beauty is one of the things that makes the Bay Area special, providing a refuge and buffer zone for the “tired, nerve-shaken, over-civilized people... that call the Bay Area home...” As a final note, one of the reasons we have developed the format for the ride of having us horsefolk solicit sponsor donations on behalf of the land trust is that it gives us the opportunity to talk to others about the wonders of getting out on the trail with a horse and seeing, firsthand, why John Muir called this area home. It is important to remember that when things get really hectic, there is all the more reason for getting out on your horse to maintain your perspective. ”

- CHIP HANKINS



If there ever was a picture that captures why the Muir Heritage Land Trust's mission is significant, this is it!

## **Martinez Horsemen's Association earns another \$6,000 for the Muir Heritage Land Trust**

The 4th annual fundraising ride on September 6, 2003 attracted 21 riders and half a dozen hikers who rode and trekked through the beautiful East Bay Municipal Water District (EBMUD) and East Bay Regional Parks District (EBRP) lands. Combined with a matching grant from Bay Area Barns and Trails, this year's ride netted over \$6,000 for the Muir Heritage Land Trust, bringing the grand total over four years to \$20,000. Axel Debus, an EBMUD ranger, rode along and was a wealth of info about the flora and fauna back in that area along Alhambra Valley and Pinole Valley. Scott, an EBRP Ranger, explained that EBRP is currently working on an acquisition that will expand the Sobrante Ridge/Kennedy Grove area by another few hundred acres. Glenn Kirby, Director of the Bay Area Ridge Trail Council (BARTC), explained how BARTC is helping plan and fund a route for the Ridge Trail, which clearly complements the mission of MHLT. All good news for those of us who like to wander around on horseback! After a couple of hours of hiking and riding through pristine valleys and ridgetops, we descended down under the crackling high tension wires alongside a subdivision of 200 houses of the Simas Valley...(see above photo) Without the tireless efforts of Executive Director Tina Batt and the many hardworking volunteers at the Muir Heritage Land Trust, we'd find more and more open space lost forever to development. To help with our work, contact:

Chip Hankins @ Wild Oaks Ranch (925-229-2122) or [chankins@smlinsurance.com](mailto:chankins@smlinsurance.com).  
Muir Heritage Land Trust [www.muirheritagelandtrust.org](http://www.muirheritagelandtrust.org)  
Bay Area Ridge Trail Council [www.ridgetrail.org](http://www.ridgetrail.org)

### **SAVING LANDS AND TRAILS FOR HORSES IN THE SAN FRANCISCO BAY AREA**

Bay Area Barns and Trails is a land and trails trust whose mission is to preserve publicly accessible trails, barns, stables, pastures, staging areas, and horse camps in Alameda, Contra Costa, Marin, Napa, San Mateo, San Francisco, Santa Clara, Solano, and Sonoma Counties.

### Easement Guide for Equestrian Use

A new manual, the Easement Guide for Equestrian Use has been released by the Equestrian Land Conservation Resource. This manual provides examples of easement language relating to equestrian use that have been extracted from ELCR's national easement collection.

The Easement Guide for Equestrian Use is divided into three categories. The first category, traditional easements, contains language granting an equestrian organization such as a trails association or riding club and, in some instances, a government or conservation organization, the right to use land for equestrian activities. The second offers conservation easements that permit equestrian use and the third category is conservation easements that require that the land be kept open for specified equestrian use. All three types of easements play an important role in continuing equestrian use.

"Many land owners are considering putting conservation easements on their land and find the language which expresses their intent for preservation of equestrian use difficult to express," states retired attorney Anson Taylor, ELCR's President. "Additionally, attorneys or land use specialists may discover new ways to protect equestrian use without diminishing other conservation values."

"ELCR's publication series has largely been developed based on the number of assistance requests about a specific area of expertise that we receive from our constituents," said ELCR's Executive Director, Kandee Haertel. "During the past six years we have seen the need for easement language grow, largely due to the success of the Equestrian Land Protection Guide, the first manual we published. Providing this new manual assists with the next logical steps of conserving land for equestrian use. Land and trail organizations across the country should benefit from this collection."

If you have questions about the Easement Guide for Equestrian Use, contact ELCR for information:

Equestrian Land Conservation Resource  
P.O. Box 423, Elizabeth, IL 61028-0423  
Tel: 815-858-3501  
Fax: 815-858-3508 Email: info@elcr.org



Sonoma Mountain Ranch Acquired for Open Space and Recreation.

## Sonoma County Open Space Authority Purchases Jacobs Ranch - Santa Rosa

County Supervisors voted to pay \$4.9 million to buy a 168-acre ranch near Jack London State Park for open space and recreation. On the northern face of Sonoma Mountain, Jacobs Ranch has 360-degree views of the county, horse barns and equestrian trails that can be used for hiking and horseback riding. The Ranch near Santa Rosa includes a single-family residence, caretaker's cottage, two horse stall barns, two exercise rings, a large storage/work shed, and grazing lands. The purchase by the county's Agricultural Preservation and Open Space District is considered a critical step in efforts to preserve Sonoma Mountain for open space and recreation,

and equestrians are excited about the land going into public ownership. The land might ultimately become a new county or state park, but that could take years because of dwindling public revenues, county officials say. For the interim, the land could be open to the public on weekends or by appointment only if the open space district finds a nonprofit group to manage the property.

Established by voters in 1990, the Open Space District can buy land for recreation but cannot maintain it. The Authority plans to identify a timeframe upon which title might be transferred to either the County, or other appropriate partner. The Sonoma County Regional Parks has expressed interest in taking title to the property and using it as a potential equestrian facility and trailhead. Until a management plan is crafted there may be a few docent-led tours. Equestrians Michael Murphy and Pat Eliot are working with the Authority to implement 'best management' practices developed by Resource Conservation Districts.

Information: Sonoma County Open Space Authority:  
Kathleen Brennan Hunter 707-565-7360

## Preserving Alum Rock Stables/San Jose

*"...what a worthy cause! I actually live in that neighborhood and would very much like to help preserve this part of the East San Jose hills' heritage..."*

*"...It was a good place for kids; they (we) seemed to come to life there, in completely different ways.*

*Happy days, truly hard work and yet happy days..."*

*"... It was (and still is) very hard to see the barn close...this has been my dream to open this barn up for business again. We are very happy to hear that you have taken interest in Alum Rock Stables. I myself learned to ride and take care of horses there, and I practically grew up in that park...a barn this old deserves to be seen and enjoyed by the public. And adding a place where people can board and rent horses to tour the beautiful Alum Rock Park would be magnificent..."*

“...It's nice to hear of a stable that might be 'reopened' -the number of equestrian facilities in the San Jose area has steadily decreased in recent years.”

“...I rode for four years at Alum Rock before the place closed. I still remember the horses there, especially Beau, a palomino I rode to win in the Western Equitation class during the show they always had at the end of the week. That was my last week there, because the next year they closed, and I never saw the place again. What can kids do?...”

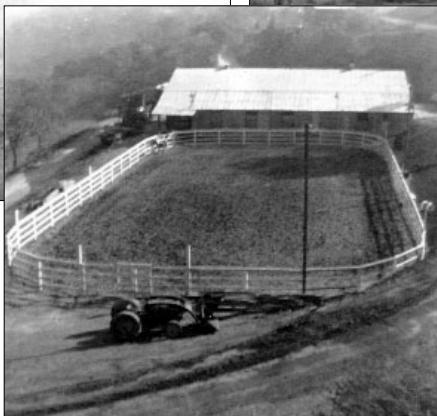
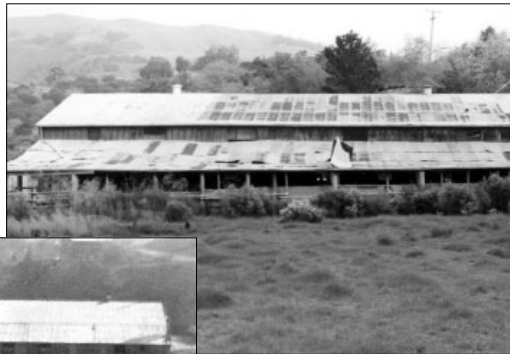
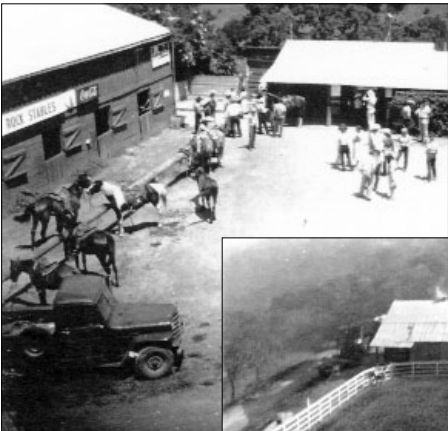
During the past year site evaluations and neighborhood outreach have continued: Mike Will and Mike McClintock, Supervising Rangers from adjoining Alum Rock Park are very welcome partners – in fact, the City has now completed its survey of the roadway adjacent to the property. Geotechnical engineer Dr. Sands Figuers of Norfleet Consultants in Livermore gave us a generally positive report on the property. BABTT is also studying how to implement 'Best Management Practices' which will protect water quality and ecological resources.

Efforts to restore Alum Rock Stables have attracted the interest of several Bay Area reporters – Judy & Allan Thompson from the 'New Neighborhood Voice' which highlights issues related to San Jose's 'Eastside'; Lisa Krieger from the San Jose Mercury News, and Jim Doyle from the San Francisco Chronicle. These reporters have given the Alum Rock Stables project a well-deserved 'spotlight.' Thank you!

Once again, we thank Don Hamilton, the current owner of Alum Rock Stables. Don has been generous with his time, patient with our fact-finding efforts, and willing to help us find the best way to 'Save Alum Rock Stables' Thank you, Don!

Acquisition of this neglected stable adjacent to Alum Rock Park will help protect scenic hillside vistas and simultaneously save an abandoned historic barn. The property has multi-use trail access across the region...including access to the Bay Area Ridge Trail. Many partners are needed to join in this effort – The ARS Steering Committee currently includes 20 members: neighbors, local historians, former riding students, and previous owners. We invite you to join the Alum Rock Stable Steering Committee as we work to re-introduce horse boarding, public trail rides, and perhaps a stables' history center.

Please contact ARS Steering Committee, Deb Adair.  
[debadair@cevaloridingacademy.org](mailto:debadair@cevaloridingacademy.org) • phone 408-904-5594



**Left & center** - Revisiting the happy days at Alum Rock Ranch.

**Right** - Alum Rock today, empty & deteriorating.

## IN THE SPOTLIGHT

**BONNIE DAVIS AND DEBBIE SMITH**  
We honor these two ladies for it is their energy, expertise and dedication that helps keep our horses an active and visible part of the Bay Area community:

**Debbie and Bonnie are indeed 'saving lands and trails for horses.'**



**Debbie Smith** is a Bay Area resident, founder and manager of the Bay Area Equestrian Network (BAEN), [www.bayquest.com](http://www.bayquest.com) - a regional on-line directory serving the California horse industry. Launched in 1997, BAEN is one of the nation's largest and most active regional equine sites receiving thousands of visitors daily from across the west and around the world.

**Bonnie Davis**, Owner, Two Horse Enterprises; Founder, Weed Free Feed Website, is also a Bay Area resident, freelance writer and equestrian trails advocate with over 30 years experience. Bonnie, in partnership with Debbie Smith, has embarked upon yet another project, "Bay Area Trails." The series of articles is a new feature of the ever expanding 'Bay Area Equestrian Network.' [www.bayquest.com](http://www.bayquest.com)

"Bay Area Trails" will highlight a trail or a park with trails open to horseowners along with trail head locations, maps of trails, trail users, hours and if overnight camping is allowed too! Directions to reach a trail location will be included and of course, any fees to use and contact information. Bonnie writes: "It's hard to imagine when one is sitting in bumper to bumper traffic on Bay Area freeways or creeping along at speeds slower than a snail's pace that just beyond freeway sound walls and backyard fences, there are located some of the most beautiful and accessible equestrian trails in the Nation!! Around the San Francisco Bay there are over 1200 miles of trails that horsemen can ride and outside the SF Bay Area, trails are tucked into city, county and onto state parks and federal lands." [www.extendinc.com/twohorse](http://www.extendinc.com/twohorse)

## BARN



## AGAIN!

### Barn Again!

"A barn is a symbol of our heritage," said April Halberstadt, a board member of the Preservation Action Council of San Jose... Unlike residential architecture, which borrows various cultural pretensions, barns have no pretensions," said Halberstadt, author of the 2001 book "Classic Barns..." "They are a very direct expression of the local economy and local cultural values. For these reasons, they deserve to be saved."

Bay Area Barns and Trails has received many inquiries from folks interested in preserving old barns on their property or in their neighborhood. We would like to hear from more of our readers – learn about their efforts - and perhaps participate in a statewide effort to establish a 'BARN AGAIN' program for California.

BARN AGAIN! is sponsored by the National Trust for Historic Preservation and the magazine 'Successful Farming.' The program provides advice, information and referrals to an average of 700 barn owners each year. It publishes barn rehabilitation information and helps supports state and local programs. Bulletins and publications include guides to restoring roofs, foundations, and exteriors.

The Office of Historic Preservation (OHP) is the governmental agency primarily responsible for the statewide administration of the historic preservation program in California. The mission of the Office of Historic Preservation and the State Historical Resources Commission is to preserve and enhance California's irreplaceable historic heritage as a matter of public interest so that its vital legacy of cultural, educational, recreational, aesthetic, economic, social, and environmental benefits will be maintained and enriched for present and future generations.

Did you know? 'If a structure is referred to in the General Plan as historic, then it is "equivalent to recognition of it 'as historically significant' by local ordinance or resolution under section 5020.1, Subdivision (k)." (City of Oakland)'

Office of Historic Preservation  
California Department of Parks & Recreation  
P.O. Box 942896 Sacramento, CA 94296-0001  
TEL: 916-653-6624; FAX: 916-653-9824  
[www.ohp.parks.ca.gov/](http://www.ohp.parks.ca.gov/)



Horses consider strategies to preserve their home in Los Altos Hills

### Westwind Community Barn/Los Altos Hills

"Supporters of Westwind Community Barn" was organized in 2003 as a non-profit charitable corporation with this challenging mission:

- To restore and maintain Westwind Community Barn, an historic operating horse facility located in Los Altos Hills;
- To develop educational and arts programs at the site for the community;
- To preserve the natural environment of its 15-acre site, which, along with the adjacent 88 acres of an open space preserve, forms an open space corridor, and provides linking pathways and breathtaking vistas.

In addition to the Westwind 4-H Riding for the Handicapped Program and the Pacific Ridge Pony Club, the property also is home to many of the Recreation Programs organized by the Town, such as horsemanship camps, Ohlone nature Camps, artist workshops, and even dog hikes. Additional recent activities have included Earth Day celebrations, a 5k walk-run, schooling horse shows, and a guided hike to local private vineyards.

Supporters of Westwind Community Barn (SWCB) are seeking to raise \$1,000,000, for the restoration of the facility, to create an endowment for future maintenance, and for its public programs. Both the Town and the "Friends" have contributed financially over the years towards the regular upkeep and improvement of the premises. However, additional major capital expenditure is required to properly restore the buildings and provide an endowment for future maintenance.

'Supporters' intend that Westwind Community Barn will remain a central fixture in the fabric of the local society and mid-peninsula community, benefiting the non-rider, the able and the disabled equestrian. As the structure of the facility is improved, we will be able to offer the community additional programs in a magical and peaceful atmosphere enriched by the presence of the noble beasts, all the way down to the smallest 4-H pony.

Donation can be made to: "Supporters of Westwind Community Barn" (SWCB), c/o Jean Mordo, Treasurer • 27693 Vogue Court • Los Altos Hills 94022

*Supporters of Westwind Barn Preservation Etn21@aol.com; [www.westwindbarn.com](http://www.westwindbarn.com)*

### Restoring Historic Folger Barn/ Woodside

The Friends of Folger Barn, in partnership with the San Mateo County Parks and Recreation Division, have embarked upon an exciting project to restore the historic Folger Estate Stable in Wunderlich Park in Woodside. The stable provides an active

boarding facility for horses in Woodside. The Friends have received approval from the Parks and Recreation Division and the San Mateo County Board of Supervisors to begin the preliminary work on the stable. This will include conceptual architectural drawings, geotechnical work, lead and lumber inspections, and other initial assessments. The work will be coordinated by W. L. Butler Construction, owned by Woodside resident Bill Butler. The stable is built from redwood harvested in the surrounding area and was appointed with pink marble baseboards, fireplaces, and gas chandeliers. It was sold in 1956 to Martin Wunderlich and subsequently donated, along with 942 acres, to the County of San Mateo in 1974. The restoration effort will be coordinated by the Folger Estate Stable Committee as a project of the Friends of Huddart & Wunderlich Parks...The Committee feels strongly that the stable should continue to function as a working equestrian facility that would provide a public benefit to our community by offering horse boarding, and other equestrian related programming.

For more information about the *Folger Estate Stable Project*, or to learn how you can help in this effort, please call the Friends at (650) 851-2660. Checks for donations to the project may be made out to the Folger Stable Project and sent to the Friends of Huddart & Wunderlich Parks, P.O. Box 884, San Carlos, CA 94070-0884.

*Folger Estate Stable Project* • [slang3@earthlink.net](mailto:slang3@earthlink.net)

## Tilden-Wildcat Horsemen Ride Earns \$10,000 for Bay Area Ridge Trail

One hundred Bay Area equestrians participated in a 5-day Labor Day Weekend Ride in the East Bay Hills organized by the Tilden-Wildcat Horsemen's Association. The ride began in Anthony Chabot Regional Park, and included Ridge Trail sections in Chabot, Redwood, Huckleberry, Sibley, Tilden and Wildcat Parks as well as on East Bay Municipal Utilities District (EBMUD) watershed. The 20-35 riders each day came from all over the Bay Area and camped out in Chabot, Tilden and Briones Regional Parks. Riders rode as many days as they were able, and at their own pace in small groups. The volunteers were fabulous, the trails beautiful, the food scrumptious, the weather perfect, the invited astronomers who showed us Mars and stars quite professional, the esprit-de-corps contagious and the fund-raising surprisingly successful. Due to the generosity of a number of the ride participants, and a few non-riders as well, \$5,000 was raised to promote the Bay Area Ridge Trail. And with the challenge grant from Bay Area Barns and Trails to double the donation, \$10,000 in total will be donated to the Bay Area Ridge Trail Council. Ride co-coordinators Martha Mikesell, Eric Schroeder, Judy Etheridge and Morris Older were ably assisted by a total of thirty-five volunteers including members of the Metropolitan Horsemen's Association and the Moraga Horsemen's Association as well as TWHA members, with an assist from Bob Power of the Bay Area Ridge Trail. This was the second year that the TWHA has sponsored this ride. The enthusiasm demonstrated by riders and volunteers alike bodes well for next year.

*Morris Older, Tilden-Wildcat Horsemen's Association* - [morrisolder@earthlink.net](mailto:morrisolder@earthlink.net)  
*Bay Area Ridge Trail Council* [www.ridgetrail.org](http://www.ridgetrail.org)



Horses enjoy exploring the Ridge Trail in the East Bay Hills

## Success Story

**Wild Horse Sanctuary Receives Major Support** The James Family Foundation has committed to donating funds to purchase 1,023 acres of lands leased by the Sanctuary for many years. The wild horses will finally have a home that is truly theirs. Combined with land that is currently donated, the wild horses will have 1,840 acres to roam freely on. Managers remain optimistic that more of the formerly leased lands can be purchased a section at a time so that the wild horse can keep their entire home of 5,000 acres that they have enjoyed for the past 20 years.  
[www.wildhorsesanctuary.org/](http://www.wildhorsesanctuary.org/)

## LINKS

- Back Country Horsemen of California**  
[www.bchc.org](http://www.bchc.org)
- BARN AGAIN!** [www.barnagain.org](http://www.barnagain.org)
- Bay Area Barns and Trails**  
[www.bayareabarnsandtrails.org](http://www.bayareabarnsandtrails.org)
- Bay Area Equestrian Network**  
[www.bayequest.com](http://www.bayequest.com)
- Bay Area Ridge Trail Council**  
[www.ridgetrail.org](http://www.ridgetrail.org)
- Bay Area Open Space Council**  
[www.openspacecouncil.org/](http://www.openspacecouncil.org/)
- Equestrian Center of Walnut Creek**  
[www.horsenpony.com/equestriancenter](http://www.horsenpony.com/equestriancenter)
- Equestrian Land Conservation Resource**  
[www.elcr.org](http://www.elcr.org)
- Folger Estate Stable Project**  
[slang3@earthlink.net](mailto:slang3@earthlink.net)
- Land Trust Alliance** [www.lta.org](http://www.lta.org)
- Muir Heritage Land Trust**  
[www.muirheritagelandtrust.org](http://www.muirheritagelandtrust.org)
- Save Alum Rock Stables**  
[www.bayareabarnsandtrails.org](http://www.bayareabarnsandtrails.org)
- Save Mt. Diablo** [www.savemountdiablo.org](http://www.savemountdiablo.org)
- Solano County Land Trust**  
[www.solanolandtrust.org](http://www.solanolandtrust.org)
- Tilden-Wildcat Horsemen's Association**  
[morrisolder@earthlink.net](mailto:morrisolder@earthlink.net)
- Weed Free Feed** [www.weedfreefeed.com](http://www.weedfreefeed.com)
- Westwind Barn Preservation**  
[www.lahopensspace.com;](http://www.lahopensspace.com;)  
[www.westwindbarn.com](http://www.westwindbarn.com)

**EQUESTRIAN LAND AND TRAIL STEWARDSHIP GRANTS AVAILABLE FOR 2004**

\$500.00 - \$2,500.00 Grants are available for projects that help preserve, enhance or restore equestrian trails, stables, pastures, and staging areas in Alameda, Contra Costa, Marin, Napa, San Mateo, San Francisco, Santa Clara, Solano, or Sonoma Counties. Preference is given to projects that demonstrate landowner, agency and community support. Applications from organizations, individuals, and landowners - public and private - are invited.

For our Grant Form, please visit our website at [www.bayareabarnsandtrails.org](http://www.bayareabarnsandtrails.org)

**1999-2003 Matching Grants awarded for Stewardship, Acquisition, Education and Capacity Building: \$ 45,000**

**Martinez Horsemen's Association/Muir Heritage Land Trust:** Annual Benefit Rides 2001-2003: \$12,000

**Tilden-Wildcat Horsemen/Bay Area Ridge Trail Council:** 2nd Annual Benefit Ride 2003: \$5,000

**Back Country Horsemen of California/North Bay Unit:** Install manure bunkers in five county parks/Construct 'emergency' horse corral in Annadel SP/Install water trough in Bodega Dunes Staging Area/2000-2003: \$6,431.

**Friends of Westwind Barn:** Capacity Building/2002-2003: \$1,000.00.

**Golden Gate Dairy Stables:** Environmental Restoration/Education/2000-2002: \$5,000.

**Weed Free Feed.com:** Website Support: \$725 per annum

**Wilderness Park Association:** Purchase trees for Napa horse camp/2002: \$ 500.

**Alto Bowl Horsemen's Association:** Materials for fencing natural springs; volunteer support 2000-2003: \$1,900.

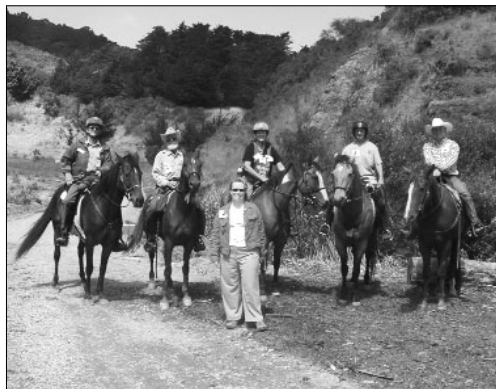
**East County Horsemen's Association/East Bay Regional Parks:** Restore Tank Trail in Antioch's Contra Loma Regional Park/2001: \$2,500.

**Bay Area Resource Conservation District 'Equestrian Facilities Assistance Program** 2000: \$500.

**Sonoma County Trails Council/Coalition for the Outdoor Recreation Plan/1999:** \$3,025.

**'Envirohorse' Capacity Building/2000:** \$500.

**University of California-Davis Research:** 'Environmental and Public Health Impacts from Horses'/2000: \$5,750.



Equestrians Celebrate Grand Opening of the Crystal Springs Watershed

an rides, bike rides and hikes three days each week. These tours will initially alternate user groups between the days (see schedule below for horses); 2-3 docents will accompany a maximum of 10 riders each day that equestrians are scheduled to ride. The route is a hard packed dirt service road along the Cahill Ridge 4 miles up and back at the moment. This will be a 2.5 to 3 hour ride with a lunch stop. Many thanks to the 14 equestrians who have taken the training so far which will allow others this wonderful riding opportunity. This road will be a great winter riding route for horses, of which we don't have enough!

As soon as the Water Department completes work on the Fifield Ridge required by the California Department of Fish and Game, we will have access to the full 9.5 miles of road up to the Portola Gate. Once this occurs, a wonderful through-ride will be possible by dropping horses at the quarry, moving rigs to Pacifica, returning, then riding to the rigs over about 13 miles of rolling hills with fabulous views of the ocean and bay simultaneously. Crab sandwiches at Nick's in Pacifica anyone?

Horsemen played an important role in helping the Bay Area Ridge Trail Council open this coveted and heavily contested section of trail. Ernst Meissner and Pat Dixon served on the San Mateo County Committee of the Ridge Trail and should be given special credit for representing equestrians. San Mateo County horsemen attended many public meetings in strength and wrote letters in support of this opening. Adda Quinn of Envirohorse provided the Ridge Trail with substantial funding to help hire technical consultants to evaluate the environmental issues alleged in the Draft EIR. But perhaps our greatest ally in getting this trail segment open was Doug Kerseg. Many thanks to you all for the patience and perseverance to see this process through to a successful conclusion.

In order to ride in the Watershed riders must carry water for themselves, and clean both their boots and horses hooves with water or dilute clorox and a wire brush prior to the ride out to prevent the spread of Sudden Oak Death fungus and weed seeds. A minimum of two docents are REQUIRED for each outing. If only two docents are available, in the event someone must turn back, the entire group must turn back. If there are three docents, the third may escort the person /horse with the problem back. So the point is that once you commit to these rides, it is a full commitment. No wussing out midstream to go get a manicure or take the car into the shop.

Initially equestrians will be led by docents on Wednesday, Saturday and Sunday. For details [www.sfwater.org](http://www.sfwater.org) then click on the butterfly which takes you to Fifield Cahill page- go to the bottom, register yourself as a new user - enter a password and reserve the number of spots (up to 5) for your ride. Your docents for the day will advise you of specific instructions and meeting arrangements.

Adda Quinn, [Envirohorse@yahoo.com](mailto:Envirohorse@yahoo.com)

Bay Area Ridge Trail Council • [www.ridgetrail.org](http://www.ridgetrail.org) • phone 415-561-2595

**Bay Area Ridge Trail Opens in Crystal Springs Watershed**

On August 21, 2003 the Fifield and Cahill Ridges, a long awaited 9-mile segment of the Bay Area Ridge Trail, was opened to limited public access. The Bay Area Ridge Trail Council worked for this trail access for more than eight years. At this time, access will be limited to docent-led equestri-

## The Future of McIntyre Ranch Equestrian Programs is in 'Your' Hands

The Greater Vallejo Recreation District is seeking public participation as it plans for development of the historic 22-acre McIntyre Ranch, located within the 2,800 acres on the old Swett Ranch. Restoration of the 'tack' barn, establishment of self-sustaining programs, such as an interpretive learning center, a corporate retreat, horse boarding, trail rides, riding lessons, therapeutic riding program, a campground for youth and adult groups, plus a hiking, biking and equestrian trailhead with access to Blue Rock Springs Park, Hiddenbrooke and the regional Bay Area Ridge Trail. These and other proposals are being evaluated by the GRVD and a Request For Proposals (RFP) is being prepared. Equestrians interested in deciding the future of the Ranch are asked to contact *Hew Hesterman, Greater Vallejo Parks and Recreation District: 707-648-4602. HHesterman@grvd.org*

## Purchase of Ranchlands surrounding McIntyre Ranch Needs Public Support

And...to preserve the ranchlands surrounding the McIntyre Ranch - lands that are now owned by PGE - the Greater Vallejo Recreation District, the Tri-Cities partnership of Vallejo, Benecia and Fairfield, and the Solano Land Trust - are embarking upon a fundraising campaign to acquire this 2,800-acre ranch. Once acquired, the lands may conveyed to a yet to be established regional park district (perhaps modeled after the East Bay Regional Parks District) which would maintain and open the land to public access. Support for the acquisition will require a remarkable degree of public support - in an area where public parks and open space preservation must become a public priority. Equestrians are invited to participate in fundraiser project... and to become docents for equestrian rides.

*Karen Swann, Solano County Land Trust 707-432-0150 [www.solanolandtrust.org/](http://www.solanolandtrust.org/)*

## Golden Gate Park Stables

Update from Tom Hart of San Francisco's Recreation and Park Department is very encouraging! The conceptual plan for the stables, presented at the public meeting of May 5, 2003, was unanimously passed by San Francisco's Recreation and Park Commission on June 19, 2003.

The Department is currently developing a construction plan and cost estimate for the conceptual plan and is working with the appropriate agencies to secure all necessary permits and variances for refurbishing the stables.

A request for proposals to solicit potential operators for the stables is expected by the end of the calendar year. It is anticipated that the facility will reopen within 1.5 to 2 years. We look forward to horses returning to the Park in the near future!

*For further information, contact the Property Management Unit of the Recreation and Park Department at 501 Stanyan Street, San Francisco, CA 94117. Phone: 415-831-2773.*

### THE EQUESTRIAN CENTER OF WALNUT CREEK

ECWC is a non-profit organization that maintains the horse arena facilities in Heather Farms Park. Its mission is to promote knowledge of horses and horsemanship, educate the community, and keep the tradition of horses at Heather Farms. The Heather Farm Master Plan Update does not include ECWC; however, the organization has leased the facility for two more years with an option of renewal three more times. The City has agreed to be responsible for maintaining the premises, provides a dumpster and weekend garbage pickup as in the rest of Heather Farms Park. ECWC intends to impress the city with its management and maintenance of the facility. The Relocation Project Task Force includes Jack Abraham, Patti Hornung, Creeky Routson, Scott Rowanpera and Dave Wilson. [www.horsenpony.com/equestriancenter](http://www.horsenpony.com/equestriancenter)

### EXCERPTS

#### Bay Area Newspapers Report on Efforts to Preserve 'Barns and Trails'

**Unstable Situations: Lack of money and space are nagging problems for equestrian centers** "...Many of the Bay Area's barns and trails are situated on public lands. That sounds good in theory. But public agencies are increasingly ambivalent about the need to protect these natural and cultural resources. Most people don't ride horses. Open space is scarce, and there are competing uses for it. Cyclists, hikers and others are vying for trail use and program funds. Equestrian facilities and trails on public lands "may be subject to the whim of that particular public agency," Weitz said. "The public at large does not recognize equestrian activities as a bona fide public recreation benefit. And if there's a dollar to be spent, there's a desire that it be spent on a baseball field, skateboard park, tennis court or swimming pool - and not an equestrian facility." As one solution, Weitz's group is encouraging its affiliated projects to form partnerships with hiking groups, bicycle groups and nature groups. "Partnership is a key. Equestrians can't do it alone..."

*- Jim Doyle, Chronicle Staff Writer - San Francisco Chronicle, February 21, 2003 [jdoyle@schronicle.com](mailto:jdoyle@schronicle.com)*

**Marin group gallops in to San Jose to save barn** "Alum Rock Stables, the city's last barn, may once again house horses... 'Urban San Jose's last riding stable, neglected and decaying, may be saved and restored for future generations to saddle up. The century-old barn and its adjoining acreage -- once home to Alum Rock Stables, known as "San Jose's Horseman's Center" -- has the same sweet, musty fragrance that it did the day its last horse was sold several years ago. But the roof leaks, the corral is gone, and trees grow in what was once open pasture. New homes in East San Jose overlook the old barn..." "When I last saw the place, I stood there and almost cried. It used to be adorable, with marvelous trail horses and wagon wheels all down the side," said Maggie Kelly, a fifth-generation San Jose resident who learned to ride at age 3. "Horses are part of our valley heritage. They built this country," Kelly said. "We need to save space for them."

*- Lisa M. Krieger, San Jose Mercury News Dec. 29, 2002*