



# BAY AREA BARNs AND TRAILS

E D U C A T I O N • S T E W A R D S H I P • P R E S E R V A T I O N **FALL 2004**

415-383-6283 • FAX 415-381-3809 • e-mail babtt@earthlink.net • www.bayareabarnsandtrails.org

## HELPING SAVE LANDS AND TRAILS FOR HORSES IN THE SAN FRANCISCO BAY AREA

Bay Area Barns and Trails (BABTT) is a land and trails trust whose mission is to acquire and restore publicly accessible barns, stables, pastures, staging areas, horse camps, and trails throughout Alameda, Contra Costa, Marin, Napa, San Mateo, San Francisco, Santa Clara, Solano, or Sonoma Counties. BABTT accomplishes its mission by providing financial and technical assistance to equestrian and other non-profit organizations, land trusts, private landowners, and public agencies. Through these partnerships, Bay Area Barns and Trails is preserving and restoring natural areas and helping to acquire and maintain parks and public open space, working farms, ranches, equestrian facilities, trails and trailheads.

## Our Programs

Our equestrian partners are grassroots activists and conservationists who appreciate the need to protect wildlife, agriculture and outdoor recreation through voluntary land preservation and old-fashioned hard work. Since 1999 Bay Area Barns and Trails has awarded \$63,519.00 in acquisition, stewardship, education, and capacity building grants to over twenty equestrian organizations and land trusts throughout the Bay Area. Application form for 2005 Stewardship, Acquisition, Education and Capacity Building Support may be found on [www.bayareabarnsandtrails.org](http://www.bayareabarnsandtrails.org).

Bay Area Barns and Trails maintains an informative website containing news from the nine-county San Francisco Bay Area, 'Success Stories' and 'Commentary' from around the country, plus links to local, state and national land preservation resources and equestrian organizations. Members receive the 'Barns and Trails e-Newsletter' that describes events, challenges, and requests for action.

## Vanishing Landscapes?

While growth seems inevitable here in the Bay Area, we believe that well-planned, responsible growth can occur when ordinary citizens are involved in decision-making processes. Growth need not negatively impact the overall quality of our lives. As equestrians, we can preserve our 'world' when we work with public and private landowners, political representatives, and land management agencies. Equestrians can contribute to positive outcomes by joining partnerships whose focus is upon acquiring and maintaining parks and public open space, working farms, ranches, equestrian facilities, trails and trailheads – this variety of projects will help protect and preserve natural areas.



Spy thanks the National Park Service for preserving miles of beautiful land & trails in the GGNRA's Marin Headlands.

## Partners in Land Preservation

California Coastal Conservancy/ Bay Area Open Space Conservancy  
Bay Area Open Space Council/Equestrian Land Conservation Resource

...More than 150 public agencies and nonprofit organizations work to protect and support enjoyment of the open space lands in the nine Bay Area counties. In 1990, some agencies decided to collaborate more closely and formed the Bay Area Open Space Council. They met, swapped stories, shared maps and other resources, and debated common problems and solutions. All agreed that more money was needed. In time, they also recognized the need for a more effective structure for advancing projects and programs of regional significance.

A conservancy is what came to mind, something like the Tahoe Conservancy, the Santa Monica Mountains Conservancy, the Coachella Valley Mountains Conservancy, the San Joaquin River Conservancy, or the Coastal Conservancy. The Coastal Conservancy already served the Bay Area, of course, but its jurisdiction was limited to the coastal zone, the bay shoreline and, in a loosely defined way, the corridors of streams that flow into the Bay. Someone suggested: instead of creating a new bureaucracy, why not ask the Legislature to give the Coastal Conservancy jurisdiction throughout the nine Bay counties, together with the responsibility to craft a comprehensive regional program?

Senator Byron Sher of Palo Alto agreed to sponsor a bill to establish the Bay Area Program within the Coastal Conservancy. Signed in November 1998, it is designed to tap the Coastal Conservancy's expertise in protecting natural and agricultural resources, working with diverse partners, and providing public access to the outdoors. Under the bill, close partnerships are to be established between the Conservancy and local agencies and organizations to prevent any gaps, duplications, or conflicts among state and local efforts. Projects expected to benefit include the 500-mile Bay Area Ridge Trail, which is linking ridgetops around the bay.

continued on page 2 >

## Working with Equestrians Benefits Land Trusts

The Equestrian Land Conservation Resource presented a workshop during this year's Land Trust Alliance Rally in Rhode Island - October 28-31, 2004 which drew 1,000 land managers for four days of learning and sharing. As a nonprofit exhibitor and participant in this Symposium, ELCR educated attendees about the importance of preserving access to and conservation of land for equestrian use. Involving horseback riders in land access and conservation, working with land managers, both public and private, will keep land available for stabling, competing, and enjoying horses in all of the variety of disciplines and ways horses are a part of the American culture. 'Loss of open land has been identified as the greatest threat to the future of all equestrian sport, recreation, and industry. By educating horse people and encouraging partnerships with conservationists and other user groups at the local level, the Equestrian Land Conservation Resource is mobilizing thousands of equestrians to work for land access and protection in their communities. We recognize that without such concerted efforts, the equestrian world as we know it is at great risk.'

-Kandee Haertel, Executive Director  
Equestrian Land Conservation Resource  
[www.lta.org](http://www.lta.org)      [www.elcr.org](http://www.elcr.org)



Marin Conservation Corp constructs multiuse segment of Bay Area Ridge Trail so riders can avoid riding on congested Hwy One above Muir Beach.

(continued from page 1) The Trail enjoys widespread public support, yet it is a monumental challenge to implement across numerous jurisdictions. The Conservancy's new program should help ease the way.

Habitat protection efforts are also expected to become more effective and efficient. The kit fox pays no heed to agency boundaries. Neither does the least tern, nor any of the other endangered, threatened, or sensitive species. The region now has one program within which the full range and diversity of species can be considered with the collaboration of 150 or more local agencies.

In crafting the legislation establishing the Bay Area Conservancy Program, Craig Britton, general manager of the MidPeninsula Regional Open Space District, described it as a glass into which water (i.e., money) can be poured and then shared. Now it's time to get some water and start pouring and sharing.

- John Woodbury/Bay Area Open Space Council [www.openspacecouncil.org](http://www.openspacecouncil.org)

## Idea of Creating a Solano County Park District Reemerging

'The Solano Land Trust is encouraging a countywide dialogue with anybody and everybody,' Land Trust board member Bob Berman said. A park district could run a string of county parks. It could be similar to the East Bay Regional Park District in Alameda and Contra Costa counties. A tax of some type could fund the effort. For example, the Solano Land Trust owns the 1,575-acre King Ranch and 1,039-acre Lynch Canyon and is buying the Swett ranch, all in the hills between Fairfield, Benicia and Vallejo. But it doesn't have money for rangers, trail upkeep and other things so it can't open its open spaces as public parks. Berman sees the first step as having voters form a park district. That district's board would then work on such details as a possible tax, something that again would go to voters. Attempts to form an open space/park district failed in 2002 in part due to the concerns of private property owners worried that trails might end up near or on their land. Kromm and Berman said the new effort focuses on parks. That previous effort had a broader approach to preserving open space.'

- Fairfield Daily Republic/Barry Eberling: 425-4646 Ext. 232;  
[beberling@dailyrepublic.net](mailto:beberling@dailyrepublic.net)

## A Win For Willow Creek

What a gift we have received from the Sonoma County Open Space Authority. On December 18, 2003 at a public meeting the Open Space Authority approved \$10 million towards the purchase of the 3,888-acre Willow Creek property. The Willow Creek property sits west of Duncan's Mills astride a forested ridge that offers ocean and Russian River views. The area provides a key link from inland Occidental to the 19 miles of coastal trails in the State Beach. The Open Space District is joining with other agencies to buy the parcel from Mendocino Redwoods Company (MRC) for a total of \$21 million. Other agencies who expect to share the purchase are: Wildlife Conservation Board with \$4 million, State Coastal Conservancy with \$4 million, California State Parks with \$2 million and MRC with a contribution of \$1 million. Equestrians have been active all along the way. We thank Michael Murphy and Ed Weber, both of the Horse Council and Backcountry Horsemen, for attending the December 18 meeting. We also thank all of you who participated in the letter writing campaign last month, and Les Nightingill for posting the alert to our website. And we thank those who have taken the bit in their teeth to get out there and explore the trails through LandPaths' public access program.

- Craig Anderson, LandPaths Executive Director, [www.landpaths.org](http://www.landpaths.org)



LandPaths hosts volunteer workday to upgrade parking and equestrian staging area.

## Bay Area Barns and Trails Awards \$1,800 to Upgrade Willow Creek Equestrian Staging Area

Since late in 1999, LandPaths has been involved with a tract of timberland formerly owned by Louisiana Pacific Company, currently owned by Mendocino Redwood LLC ("MRC") outside of the town of Occidental in Sonoma County. "Willow Creek" is a 5200-acre wildland property with recreational and scenic resources almost beyond compare relative to other coastal parks. Since 2002 LandPaths has worked with MRC to provide access to local residents to this property as a de-facto park for free. Permit holders as part of LandPaths' "Friends of Willow Creek" program (or "folk" as Ed Weber of Backcountry Horse'people' likes to refer to it) enjoy the property, receive a combination to its gate and copies of maps in exchange for providing "eyes and ears" for MRC and surrounding residential property owners. In addition, LandPaths has secured over 500K in funds from Cal Fish & Game and State Water Board in order to expedite watershed improvement projects in the Willow Creek basin over the next three years. 3,300 of the property's 5,200 acres are currently in the process of being acquired for inclusion as part of the Sonoma Coast State Beach part unit.

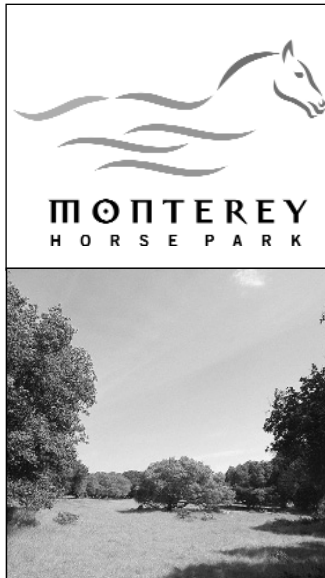
Participating Community Groups include the North Bay Unit of California Backcountry Horsemen, the Sonoma County Horse Council, and LandPaths Volunteers. Matching Funds included \$140 interest from LandPaths "Iron Horse" endowment; \$400 LandPaths administrative funds to partially cover staff time; \$750 Iron Horse Vineyards personnel and operator of scraper/loader for day. A great partnership indeed!

## Monterey Horse Park - Fort Ord

Monterey Horse Park advocates continue to work on improving the design of the Horse Park and have developed a tentative plan for Phase One of the construction. The group has prepared and submitted to the County of Monterey proposed acquisition documents for the transfer of the land, currently in the form of a long-term lease with an option to buy. The group also meets on a regular basis with the Fort Ord Reuse Authority (FORA) and other interested parties regarding water conservation, traffic flow and other aspects of the conversion of Fort Ord to civilian uses.

Monterey Horse Park's website:  
[www.montereyhorsepark.org](http://www.montereyhorsepark.org)

For additional information:  
[info@montereyhorsepark.org](mailto:info@montereyhorsepark.org)



## Sonoma County Agriculture and Preservation District

Public access and other recreational opportunities are available on lands preserved by the District.

As stated in the ballot measures, preservation of agricultural and open space land by the District is accomplished primarily through conservation easements. When the District acquires a conservation easement, fee ownership of the property is retained by the landowner. Since the District does not own the land outright, it cannot permit unlimited public access. Public hikes and tours of various natural resource, scenic lands, and working farms protected under the program are offered, however, through District partnerships with organizations such as LandPaths. The District may also assist with providing new or expanded recreational opportunities through fee acquisition, such as securing a future park site. Properties such as Gray Creek, Cloverdale River Park, the West County Trail and several others were acquired by the District and conveyed to the State or Regional Parks Departments or other appropriate entities to develop and manage for recreational and open space purposes.

[www.sonoma-county.org/opensp/aboutus](http://www.sonoma-county.org/opensp/aboutus)

## Napa County Parks and Open Space Advisory Committee Discussing Land Preservation

The Napa County Parks and Open Space Advisory Committee has been holding monthly meetings in Napa and St. Helena in order to develop a plan for preservation and protection of open space, watersheds and natural resources. The committee is also seeking ideas to address the need for improved access to unique natural areas for low-impact recreational opportunities. The committee plans to make recommendations to the Napa County Board of Supervisors regarding the allocation of approximately \$1 million of Prop. 40 bond funds by the end of 2004. It will also provide recommendations on the structure and organization of a Napa County parks and open space agency. Equestrians are welcome to participate in these discussions.

Stacy Drew, Napa County Department of Public Works/Napa County Parks and Open Space. 707-253-4351



The San Francisco Bay Area is fortunate to have land trusts that allow recreational activities along with their agricultural and natural resource protection mission. Bay Area Barns and Trails supports these land trusts by supporting equestrian-led fundraisers. Bay Area Barns and Trails also publicizes land trust programs on its website: [bayareabarnsandtrails.org](http://bayareabarnsandtrails.org)

### Save Mount Diablo, the Muir Heritage Land Trust, the Trust for Public Land and the Tri-Valley Conservancy

have preserved some 12,800 acres or 20 square miles of fields, rangeland, marshes and vineyards in the last decade. A nationwide group, the Trust for Public Lands, recently bought 4,000 acres at Cowell Ranch near Byron for a new state park. Most land trusts are grass-roots organizations of people who band together to form a nonprofit group to buy land or development rights for land, and to raise money to accomplish those tasks. Land trusts buy land the government can't afford to buy, can't buy fast enough, or in some cases refuses to consider important enough to buy. A trust can take weeks to buy land that it would take government months or years to buy, public land managers say. State government resource agencies sometimes provide money to trusts in recognition that the local community groups are far better suited to broker deals with landowners and solicit donations to pay for it, officials say. 'They know the landowners and have a closer relationship to them than a government agency would have.'

David Wayman, California Coastal Conservancy, which supplies grants to many land trusts.

[www.coastalconservancy.ca.gov](http://www.coastalconservancy.ca.gov)

### Save Mount Diablo

'Save Mount Diablo (SMD) is the East Bay's oldest land trust at 33 years and is so organized in fund raising that it raised \$75,000 last year at its annual dinner auction, which caters to nature lovers.'

Equestrians take note: 'Two SMD supporters each paid \$850 apiece for a guided bird-watching hike. (Bay Area Barns Trails will support a equestrian-organized fundraising ride for SMD-give us a call.)

[www.savemountdiablo.org](http://www.savemountdiablo.org)  
[www.savemountdiablo.org/DiabloWatch.htm](http://www.savemountdiablo.org/DiabloWatch.htm)



Horses tread softly on the land while crossing new bridge on Main Horse Trail in Little Warm Springs Creek/Lake Sonoma. Thanks to Dan Horn and his team from Back County Horsemen/North Bay for a job well done!

### Bay Area Ridge Trail Council plans celebration of 300th mile

The Bay Area Ridge Trail Council (BARTC) plans, promotes, and constructs the Bay Area Ridge Trail, a 500-mile multiple-use trail connecting parks and preserved open spaces along the ridgelines surrounding California's San Francisco Bay. BARTC offers a variety of activities, invitational on private lands and public: hikes, mountain bike rides, or horse rides along the Ridge Trail or connecting trails. In San Mateo County, the San Francisco Peninsula Watershed is now open three days a week, by reservation only, to docent-led groups of hikers, bicyclists, and equestrians. The San Francisco Water Department manages scheduling and reservations for watershed outings.

For more information, 415-561-2595

[www.ridgetrail.org](http://www.ridgetrail.org)

### Muir Heritage Land Trust

"Land trusts are a way for the community to get involved protecting natural resources," says Muir Heritage Land Trust's Executive Director Tina Batt. Local residents formed the Muir Heritage Land Trust 15 years ago after developers offered to set aside 150 acres of hilly land as open space if any group would step forward to accept it. Not long afterward, when her group had to raise \$75,000 to buy another property, Batt recalls worrying if people would open their wallets. "Then one of my neighbors came to me and said, 'Here's \$1,000. I know you can do it,'" she recalled. "He gave us courage, and we succeeded."

The Muir Heritage Land Trust works with private landowners as well as East Bay Parks District, Contra Costa County, the Bay Area Ridge Trail Council, and other agencies and nonprofits. 'MHLT works to preserve the undeveloped lands that provide a buffer between the ever-expanding cities and suburbs of Contra Costa County, California. "Over the years, the Martinez-based land trust has worked with private landowners, nonprofit organizations and public

continued on page 5 >

agencies to acquire more than 600 acres from Orinda to the Carquinez Strait. The trust celebrated its 15th anniversary Aug. 15, 2004 with work on its most ambitious land acquisition yet – acquisition of the last piece of the historic 9,000-acre Fernandez Ranch, a ranch that originally extended from Martinez to Pinole. The purchase will nearly double the organization's land holdings, and stand as the largest open space preserve in west Contra Costa County. "It's a really beautiful piece of property," Batt explained. "If you drive Highway 4 and look to the left where Franklin Golf Course is, it just takes your breath away." But the land purchase represents much more, she said. For one thing, it preserves the land's history, which has been in the Fernandez family since the 1860s, when it was originally purchased through a Spanish land grant, she explained. Also, when maintained as open space, the land will help stem the creeping urban sprawl of housing developments immediately west of Hercules, from spreading into the Briones Hill Agricultural Preserve. "Because of its location, there's a need to protect it when you see what's coming in from Hercules," Batt said. "It protects a significant portion of that boundary."

Because the Fernandez Ranch has not changed hands, Batt said, it's been maintained and managed as a working ranch. That maintenance has preserved the wildlife, including such endangered species as the Alameda whipsnake and the California red-legged frog. The acreage is also a crucial piece in helping to complete the Bay Area Ridge Trail, said Steve Pardieck, land trust board member: "This property is just a jewel," Pardieck said. "It's a big deal for the public in Contra Costa County. It will do so much to protect a huge swath of wild habitat, the plants and animals that exist there. It's a nice piece of an ongoing desire to complete the Bay Area Ridge Trail."

As our neighborhoods become more crowded, recreation and relaxation in nearby open space bring welcome escape from a busy world. When most of our days are spent in cars and buildings, vistas of trees, earth and sky bring relief from cluttered urban landscapes.'

- Cassandra Braun & Denis Cuff: [dcuff@cctimes.com](mailto:dcuff@cctimes.com).  
[www.muirheritagelandtrust.org](http://www.muirheritagelandtrust.org)

## Landpaths

'LandPaths, founded in 1996, is dedicated to fostering a love of the land by creating ways for people to experience the beauty, understand the value, and assist in healing the land in Sonoma County. LandPaths' free public outings visit protected open spaces, farms and parks-in-development throughout Sonoma County. LandPaths' ongoing stewardships projects include removing non-native plant species to improve natural wildlife habitat, repairing old logging and ranch roads to increase and improve steelhead spawning habitat, and installing nesting boxes and perching sites for cavity-nesting birds.' In June, 2004 Landpaths hosted a Willow Creek Staging Area Workday during which the Mendocino Redwood Company, the 'Iron Horse' endowment, volunteers from the Sonoma County Horse Council and Back Country Horsemen/North Bay were motivated by an \$1,800 grant from Bay Area Barns and Trails. Volunteers helped restore an eroded parking area and trailhead and set the stage for permanent equestrian access to the 32+/- miles of existing roads and trails. Negotiations are underway to transfer 3,300 acres of the Willow Creek property to Sonoma Coast State Beach Park Unit/California Department of Parks and Recreation. This will be accomplished with the financial support of the Sonoma County Agriculture Preservation and Open Space District, the California Coastal Conservancy, and the Wildlife Conservation Board.'

Craig Anderson, Executive Director

[www.landpaths.org](http://www.landpaths.org)

## Solano Land Trust Seeks Equestrian Docents

'The Solano Land Trust is a private, non-profit organization whose mission is the preservation of agricultural lands, open space, and resources through the acquisition of land and conservation easements, education and land management. In February, 2004, the Solano Land Trust hosted gathering of equestrians to help plan docent-led rides along a new link in the Bay Area Ridge Trail plus other trails and fireroads in Lynch Canyon and adjacent properties. Currently, on pre-arranged days, hikers and bicyclists are now allowed to explore these trails and fireroads; however, equestrian rides have not been available because the Trust needed to recruit and train equestrian docents. This process is underway. The Trust hopes to host equestrian rides in 2005: all depends on availability of equestrian docents. You and your horse are invited to share your equestrian energies and expertise to help implement and expand trail riding opportunities in Solano County.'

-Jim Ball, Executive Director, 707-432-0150  
[www.solanolandtrust.org](http://www.solanolandtrust.org)

## Peninsula Open Space Trust

'The Peninsula Open Space Trust (POST) is a nonprofit land conservancy that gives permanent protection to the beauty, character, and diversity of the San Francisco Peninsula, for people here now and for future generations. The Trust encourages the use of these lands for natural resource protection, wildlife habitat, low-intensity public recreation, and agriculture. Since its founding in 1977, POST has helped to give permanent protection to more than 50,000 acres of land in San Mateo and Santa Clara counties — an area one and a half times the size of San Francisco and 11 times the size of Yosemite Valley.

POST's unique and effective approach to land protection taps the power of both private and public sectors. Using funds from private donors, it moves quickly to purchase critical open spaces as opportunities arise. Private dollars also enable us to leverage matching funds from state and federal agencies to secure the Peninsula's precious natural legacy.'

-Audrey Rust, Executive Director  
[www.openspacetrust.org](http://www.openspacetrust.org)



## Trust for Public Land

'Land conservation is central to TPL's mission. Founded in 1972, the Trust for Public Land is the only national nonprofit working exclusively to protect land for human enjoyment and well-being. TPL helps conserve land for recreation and spiritual nourishment and to improve the health and quality of life of American communities.

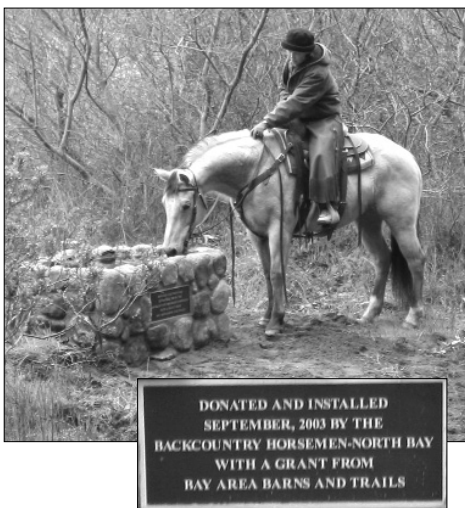
TPL's legal and real estate specialists work with landowners, government agencies, and community groups to create urban parks, gardens, greenways, and riverways, build livable communities by setting aside open space in the path of growth, conserve land for watershed protection, scenic beauty, and close-to-home recreation, safeguard the character of communities by preserving historic landmarks and landscapes.

TPL pioneers new ways to finance parks and open space; helps generate federal, state, and local conservation funding; and promotes the importance of public lands.

TPL helps communities create a "greenprint for growth" by protecting important land that may be threatened by urban or suburban sprawl. TPL believes that connecting people to land deepens the public's appreciation of nature and the commitment to protect it. Since 1972, TPL has helped protect more than 1.9 million acres in 45 states--from expansive recreation areas, to historic homesteads, to vest-pocket city parks.'

[www.tpl.org](http://www.tpl.org)

Dan Horn and BCHC/North Bay crew designed, built and installed permanent water trough in Bodega Dunes.



## Oakland City Stables: Request for Proposals Solicited for the Operation of Oakland City Stables

The City of Oakland has solicited proposals from individuals, organizations, teams, or firms interested in providing concession services for the Oakland City Stables ("City Stables"), under the direction on the Office of Parks and Recreation (OPR). Proposals are due and must be received at the Office of Parks and Recreation, 250 Frank Ogawa Plaza, Suite 3330, no later than 4:00 p.m., on Thursday, October 28, 2004. Proposals are to be addressed to the attention of the Director, Office of Parks and Recreation.

In responding to the Request for Proposals (RFP), the proposed concessionaire shall describe in detail how he/she intends to provide the concession services as described in this RFP.

Oakland City Stables is located at 13560 Skyline Blvd. in a residential neighborhood near Anthony Chabot Regional Park. Nestled in the trees in the Oakland hills, the property overlooks Oakland, San Leandro and the San Francisco Bay. It covers 7 acres which includes a covered and an open arena, horse boarding facilities, and access to East Bay Regional Park trails. Oakland City Stables was originally part of the Peralta Land grant (Rancho San Antonio). It was owned and managed by the Shriners and then by private owners until the City of Oakland purchased the property in 1991 with Measure K funds. Since then, the City has improved the property by upgrading the arena, paving the road, installing a water line and fire hydrant, upgrading the electrical system and building a restroom/snack stand.

The stable was operated by a concessionaire who provided private horse boarding and the Wildcat Canyon Ranch Youth Program, which taught inner-city children to care for the horses. However, the concessionaire contract was not renewed because of a dispute with neighbors.

'Boarders vacated the premises about one week after receiving a letter from the Oakland Parks and Recreation Department stating that the Oakland Animal Shelter will take into custody any horse remaining on the premises after Sept.1. On July 20, 2004 the City Council decided to close the stables, withhold \$4,000 in monthly maintenance funds and postpone renovations until the Parks Department picks a new concessionaire who can both manage the facility and offer youth programs to Oakland residents. Council committee members decided against spending \$100,000 for immediate repairs.

-Kip Walsh, Office Administrator, City of Oakland, Office of Parks and Recreation  
250 Frank Ogawa Plaza, Suite 3330, Oakland, CA 94612  
[kwalsh@oaklandnet.com](mailto:kwalsh@oaklandnet.com); (510) 238-6495; Fax: (510) 637-0278

## Tilden Wildcat Horsemen/Metropolitan Horsemen Raise \$13,275 for Bay Area Ridge Trail

Seventy-eight enthusiastic riders from all over the Bay Area and beyond participated in this year's Labor Day Weekend 6-day 100-mile East Bay Hills Ride to benefit the Bay Area Ridge Trail. Twenty-five of the riders rode all six days, most people rode at least 2 days, and there were about 40 riders each day. Riders camped in Tilden Park, at Sequoia Arena in Joaquin Miller Park and in Anthony Chabot Park. Although many of the riders were from the Bay Area, very few had ridden much in the East Bay, and as a group they were astonished by the scenic vistas and landscapes, the variety of terrain and the beauty of the trails. Volunteers provided excellent meals, and the riders loved the evening

continued on page 7 >



Tilden Wildcat Horsemen 6-Day Riders view urban lands from East Bay Regional Parklands

programs--a classical harp concert, a bluegrass band, talks by Ridge Trail Council staff, a horse massage workshop, and presentations by an astronomer and a naturalist. In Tilden they swam and showered at Lake Anza, and in Redwood they viewed the stars at Chabot Space and Science Observatory.

With the gift of \$5,000 from Bay Area Barns and Trails, donations from riders and their sponsors, as well as ride profits generated despite low rider fees by an enthusiastic group of over 75 volunteers, the ride raised \$13,725 for the Bay Area Ridge Trail.

The Tilden Wildcat Horsemen's Association September-October Newsletter has the complete, exciting and fabulous story. Bay Area Barns and Trails urges every trail rider in the Bay Area to join this great group!

-Morris Older, [morrisolder@earthlink.net](mailto:morrisolder@earthlink.net)

## **Martinez Horsemen's Association (MHA) 5th Annual Fundraiser Earns \$2,200 for Muir Heritage Land Trust**

On Saturday, September 18, 2004 16 riders and hikers rode and trekked along Dutra Road at the head of Feeder Trail # 1, up through the newly acquired Dutra Property, and around Sky Ranch, then down over the Matta Cattle Ranch. Tina Batt, Executive Director of the Muir Heritage Land Trust, spoke about the Fernandez Ranch acquisition and how important it will be to the trail system as well as the ecology of the area. Maria Surrell from California State Horsemen's Association (CSHA) spoke about her favorite program, the TRAP program that encourages members to log their miles, the trails they rode on, and how the trails have been maintained or any other pertinent information in a special log for the CSHA. Participants are able to accrue points for hours ridden, and turn those points in for patches and prizes.

The logs are quite often used to show Government officials how trails are used. Following a Kinders sandwich lunch, the riders rode straight back over the hills to the staging area on Dutra Road. The group raised \$1,100 – which was matched by a grant from Bay Area Barns and Trails - bringing the 2004 total to \$2,200. Over the past five years, the Martinez Horsemen's Association has earned over \$21,000 to benefit the outstanding land acquisition and stewardship programs of the Muir Heritage Land Trust.

Barbara Glenn/Martinez Horsemen's Association (925) 228-8210  
Muir Heritage Land Trust:[muirheritagelandtrust.org](http://muirheritagelandtrust.org)

## **Contra Costa County Parks & Open Space Measure Fails**

An opportunity to preserve, protect and maintain Contra Costa County open spaces and parks failed to receive a 2/3 majority. The measure would have raised more than \$8 million a year to preserve and expand open space, improve parks and trails, restore creeks and protect farmland, shorelines and wildlife corridors. If it had passed, the Measure would have raised \$175 million over a 30-year period for the preservation and maintenance of the County's last remaining natural areas. Projects slated for funding included expansions to Mt. Diablo State Park, acquisitions to the Muir Heritage Corridor and along the Richmond Shoreline, and the preservation of significant hillsides, ridgelines, creeks, shorelines and wildlife habitat throughout the County. The Measure also would have provided funds for the maintenance of existing parks throughout the County.

**Only 35% of the households returned their ballots!**

Save Mount Diablo was greatly involved with this effort and recently wrote, 'Save Mount Diablo expresses special thanks to the many SMD volunteers and supporters who played such a vital role in assisting with this Parks & Open Space Measure, and looks forward to your continued support. We also express our gratitude to the County Board of Supervisors and the East Bay Regional Park District for their ongoing support of open space preservation in our County.'

[www.savemountdiablo.org/  
open\\_space\\_measure.htm](http://www.savemountdiablo.org/open_space_measure.htm)

Coalition for Open Space,  
visit [www.contracostaopenspace.org](http://www.contracostaopenspace.org)



**GOLDEN GATE DAIRY STABLES PASSES WATER QUALITY REVIEW**

Maureen Pinto, President of Golden Gate Dairy Stables, reported that their representatives met with National Park Service/Golden Gate National Recreation Area, Regional Water Quality District and Marin County Planning staff to review mitigations accomplished by the stable residents over the last few years. The good news was that water quality tests showed improvements since 1997. The importance of this finding cannot be underestimated: nearby Redwood Creek, whose headwaters on Mount Tamalpais flow parallel (but across Highway One) to the Stables into the Big Lagoon in Muir Beach. Extensive efforts are underway to increase the opportunities for the endangered Coho Salmon whose spawning grounds are upcreek from the stables.

It does appear that there is no intention to close these historic stables, but rather to give support and suggestions for improvements so horses are NOT targeted as source of pollution when nearby beach or stream gets on list if coliform counts are elevated. Stables' managers were complimented on their natural resource management plans and projects.

**Community Drumming Up Support for Preservation of Marin Stables/Fairfax**

'Since 1937, the pre-WWII Marin Stables in the Deer Park Area of Fairfax has provided a cozy shelter for horses, a community gathering spot for neighbors and boarders alike – and a tree-lined trailhead leading up to the 22,000 acres of the Marin Municipal Water District. Current proprietor Jim 'Jimbo' McDermott has held a lease with District since 1980. Jimbo and his dedicated staff have spent many hours caring for the property and restoring the barns and arenas. Enjoyed by hikers and equestrians alike, Marin Stables is owned by the Marin Municipal Water District (MMWD) which is now considering alternative uses for the property.

Marin Stables is now only one of the two public stables remaining in Central Marin County. Its existence for sixty-six years parallels the history of Marin. It offers historical perspective and a demonstration of skills, attitudes and lifestyles of increasing value in this new century. It serves as a reminder that craftsmanship, labor and purpose can provide benefits to man and nature. Marin Stables remains a place synonymous with humane animal care and quality stable management. In 2002, a group of concerned citizens formed "Friends of Marin Stables" to investigate options and address issues with the MMWD. FOMS representatives have met with District staff to define issues of concern to the District...It is the hope of FOMS, Jim McDermott, and all who know and love Marin Stables that the positive relationship shared by Marin Stables, the District and the community will continue to thrive to the benefit of all.'

*-Joan Carson, Marin County Equestrian  
-Kathy Risso 415-399-2171; KJRisso@hotmail.com*

**Continuing Delays in Reopening San Francisco's Golden Gate Park Stables**

'Equestrians hoping to saddle up at Golden Gate Park can stop holding their breath. The city has to clear some bureaucratic hurdles before deciding the fate of the parks' stables, which have been closed since 2001.

Chronicle-Watch began reporting on the stables in February, after tipsters complained about slow progress despite promises from the parks department to get them reopened quickly. Former parks spokeswoman Becky Ballinger had told us that an environmental impact review to evaluate the necessary repairs and safety upgrades was in progress. Park spokesman said the review will not be complete until the end of 2005.'

*- November, 2004 - Chronicle Watch*

**THE SAN FRANCISCO STABLES FOUNDATION**, expecting prompt decisions and action from the San Francisco Recreation and Parks Department, began raising funds so that it could help rebuild the last remaining riding facility in San Francisco and develop programs for local equestrians as well as disadvantaged youths. The San Francisco Stables Foundation established a 501(c)(3) non-profit corporation and kicked-off a capital campaign which intends to raise \$3.5 million in cash and pledges by mid 2005. It is the intention of the Foundation to raise the requisite funds to ensure that construction may begin as quickly as possible.

Bay Area Barns and Trails donated \$1,000 to support the Foundation's (SFSF) first annual fundraiser, Derby Day SF - Saturday, May 1, 2004. Bay Area Barns and Trails supported the San Francisco Stables Foundation because continued on page 9 >



**ENVIROHORSE: A repository and clearing-house for scientifically sound data and information about the horse and its place in the environment.**

*- Adda Quinn, envirohorse@yahoo.com*





All alone waiting for neighbors to move in Golden Gate Park Stables (photo from 2002)

it intends to ensure equestrian use of parks and trails, preserve boarding opportunities for horses, provide equestrian education and riding lessons to the public, protect parklands for future generations of visitors. Bay Area Barns and Trails continues to advocate prompt action by the District and asks that its constituents do the same. Write or call:

-Tom Hart, Property Management Unit of the Recreation and Park Department,  
501 Stanyan Street, San Francisco, CA 94117. Phone: 415-831-2773  
-San Francisco Stables Foundation [www.sfsf.org/](http://www.sfsf.org/)

## Folger Barn in Woodside Receives Historic Designation

'The Friends of Folger Barn, in partnership with the San Mateo County Parks and Recreation Division, have embarked upon an exciting project to restore the historic Folger Estate Stable in Wunderlich Park in Woodside. The stable provides an active boarding facility for horses in Woodside. The Friends have received approval from the Parks and Recreation Division and the San Mateo County Board of Supervisors to begin the preliminary work on the stable. This will include conceptual architectural drawings, geotechnical work, lead and lumber inspections, and other initial assessments. The work will be coordinated by W. L. Butler Construction, owned by Woodside resident Bill Butler. The stable is built from redwood harvested in the surrounding area and was appointed with pink marble baseboards, fireplaces, and gas chandeliers. It was sold in 1956 to Martin Wunderlich and subsequently donated, along with 942 acres, to the County of San Mateo in 1974. The restoration effort will be coordinated by the Folger Estate Stable Committee as a project of the Friends of Huddart & Wunderlich Parks...The Committee feels strongly that the stable should continue to function as a working equestrian facility that would provide a public benefit to our community by offering horse boarding, and other equestrian related programming.

For more information about the Folger Estate Stable Project, or to learn how you can help in this effort, please call the Friends at (650) 851-2660.

Checks for donations to the project may be made out to the Folger Stable Project and sent to the Friends of Huddart & Wunderlich Parks, P.O. Box 884, San Carlos, CA 94070-0884.

Tours of the Folger Stable can be arranged through the Folger Stable Committee. For more information about the restoration and history projects, or to get involved, call committee co-chairs Jill Daly at 329-1610, or Susan Lange at 365-6477, or Ellen Schuette at the Friends of Huddart and Wunderlich Parks at 851-2660.

- Folger Estate Stable Project  
[slang3@earthlink.net](mailto:slang3@earthlink.net)

## Napa Solano Ridge Trail

Bay Area Barns and Trails contributes \$2,500 to match the \$2,500 raised during AERC Wine Country Ride. In addition to funds raised locally by equestrians, neighbors and local organizations, the Bay Area Ridge Trail Council/Coastal Conservancy/ Proposition 40 contributed \$100,000 towards construction of 1.6 miles of multi-use trail through private land owned by the Tuteur Family Trust. Together, these funds will help complete a trail link connecting the Bay Area Ridge Trail between Napa and Solano County public lands. Trail construction is scheduled to begin in Spring, 2005 and should be completed and dedicated by Fall, 2005.

-Bay Area Ridge Trail Council  
415-561-2595; [www.ridgetrail.org](http://www.ridgetrail.org)

## SAN JOSE'S CEVALO RIDING ACADEMY

San Jose's Cevalo Riding Academy ensures that South Bay residents have access to quality equestrian programs and a connection with Silicon Valley's rural roots.

Cevalo Riding Academy was founded in the fall of 2002 in an effort to preserve convenient, affordable access to equestrian activities in the South Bay. Cevalo is an educational non-profit organization that offers riding lessons for children and adults, horsemanship camps, and other equestrian activities and community outreach programs. Its primary purpose is to educate the community about horses and provide a safe environment for children and adults to learn horsemanship, sportsmanship, and teamwork. Cevalo Riding Academy is a cooperative environment where students and boarders are active participants in day-to-day operations and have a strong voice in the programs and services that are offered. By working together, we can ensure that South Bay residents continue to have access to quality equestrian programs and a connection with Silicon Valley's rural roots.

-Deb Adair, 408-398-6789;  
[debadair@designcage.com](mailto:debadair@designcage.com)



## **BABTT Grants Program**

**Preservation and Stewardship  
1999-2004 . . . . . \$63,519**

**Preservation and Stewardship  
2004 . . . . . \$20,516**

**ALAMEDA/CONTRA COSTA COUNTY  
October 2004 . . . . . \$5,000**

Tilden/Wildcat Horsemen/Metropolitan  
Horsemen: Bay Area Ridge Trail

Improvements/maintenance: East Bay  
Regional Park District lands

**June 2004 . . . . . \$1,000**

Mokelumne Coast to Crest Trails Project:  
Trail signs. Martinez-Brentwood: steward-  
ship, construction

### **CONTRA COSTA COUNTY**

**September 2004 . . . . . \$1,100**

Martinez Horsemen's Association/Muir  
Heritage Land Trust: Fernandez Ranch  
Campaign

**May 2004 . . . . . \$1,525**

Tilden/Wildcat Horsemen: 2,100 gallon  
Water Storage Tank and Horse water  
trough: Es Anderson Horse Camp, Tilden  
Regional Park-East Bay Regional Park  
District

### **MARIN COUNTY**

**May 2004 . . . . . \$ 170**

Alto Bowl Horseowners Association/Marin  
County Open Space District: Habitat  
Restoration/Invasive Plant Removal:  
Volunteer Support

### **NAPA COUNTY**

**September 2004 . . . . . \$2,500**

Bay Area Ridge Trail Council & Tuteur  
Family Trust: Napa/Solano Ridge Trail.

Match funds raised by AERC Wine  
Country Endurance Rides to help complete  
& maintain 1.6 mile multiuse trail link  
that will eventually connect Napa and  
Solano Counties.

### **SAN FRANCISCO - CITY & COUNTY**

**June 2004 . . . . . \$1,000**

San Francisco Stables Foundation: Support  
fundraising efforts to restore Golden Gate  
Park Stables.

## **Westwind Community Barn Repairs Underway**

'Supporters of Westwind Community Barn is a nonprofit IRS 501(c)(3) organization, formed in 2003. Its mission is to restore Westwind Community Barn, develop new programs for our youth that connect our rural heritage with the present and promote stewardship of the unique environment of Westwind Barn. The Barn will continue to provide boarding and training, and host the 4-H handicapped riding program, US Pony Club, a resident's riding camp, and other programs. SWCB will also add small classes in rediscovering lost arts and crafts environmental studies.



Westwind Community Barn in Los Altos Hills

Supporters of Westwind Community Barn's first calendar year has been full, exciting, and gratifying. The Supporters held their first major fundraiser on May 1st, a "Kentucky Derby Day" at a magnificent new horse farm in Los Altos Hills (thanks to the generosity of the owners). Everyone in the community was dying to see it, so the event there brought out every horse person in the area. It was a great first fund-raiser for the 'Supporters' which has attracted the local Los Altos Foundation to make a donation to the Barn. Our goal is one million dollars – and now that we have had contractors look at the building we know that it's going to easily cost us a million dollars to restore the building.

### Upcoming Fundraisers:

- 2nd Annual Home for the Holidays: December 5, 2004, 3-5PM, a community celebration to kick off the holidays with refreshments, children's activities, and a barn lighting at dusk.
- 2nd Annual Kentucky Derby Day at Maple Leaf Farm - Saturday, May 7, 2005: Alex and Cathy Mendez will let us hold our fundraiser at their fabulous horse farm again! We were sold out last year (and rightly so, it was a terrific party and we raised \$70,000 for the Barn).
- The 'Door' Project: Supporters' have raised \$20,000 for this project and the Town of Los Altos Hills has budgeted \$15,000 for additional structural improvements, including window replacement, gutter repair, replacement of flooring in the aisles and hayloft. Bay Area Barns and Trails donated \$2,500 to help replace one of the five exterior ground level aisle doors.

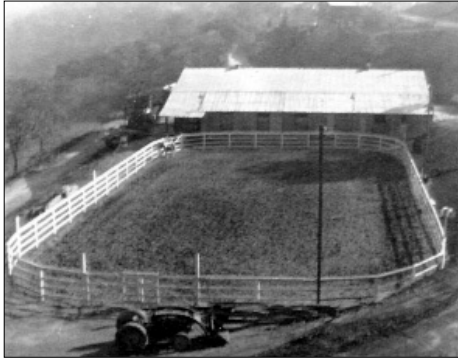
The project will use materials and hardware specifically chosen to preserve the traditional style of this 34-horse stable built in the 1940's and added onto in the 1970's. Additional grants have been received from public foundations: The David and Lucile Packard Foundation, Los Altos Community Foundation, and the Skoll Foundation. As an all-volunteer organization we would love to receive your gift of your time, talents, expertise, & skills, particularly in these areas: Program design and implementation, event planning and production, computer, website, and graphic design assistance.

We're also forming a building committee to help with the development of a comprehensive plan for the restoration.'

*elainenelson21@aol.com*; 650-941-5361; FAX 941-5915;

Westwind Community Barn is located at 27210 Altamont Road, Los Altos Hills.

*www.westwindbarn.com*



Alum Rock Stables/San Jose 1960



Alum Rock Stables 2003, empty & deteriorating.

## Neighbors Ask for Meeting with City Staff to Discuss Future of Alum Rock Stables

Over the past two years Bay Area Barns and Trails has been meeting with the stables' landowner, Alum Rock Park rangers, and neighbors to discuss how, together, we might acquire and restore this historic barn, re-establish public boarding and trail riding, and provide a neighborhood history and community center. BABTT believed that by saving the property from demolition we could protect scenic hillside vistas and wildlife habitat and simultaneously save an historic barn. An added incentive was that the barn would provide boarding for 15+ horses and accommodate multi-use trail access across the region...including access to the Bay Area Ridge Trail.

After a City survey of the entrance road between Alum Rock Road and the Stable confirmed that a key section of the road actually belonged to City Parks, BABTT requested an opinion from the City: 'Could BABTT be granted a perpetual road easement onto the stable property?'

In February 2004, Dave Mitchell, Park Planning Manager for the City of San Jose, advised BABTT representatives that 'no road easement can be granted to another entity without a vote of the citizens.' The City of San Jose attorney stated that any agreement with BABTT regarding the driveway to the Barn would be subject the three-year maximum period that is renewable. Under City Charter this is the maximum period that the City can offer without a vote of the people to extend such agreements beyond three years.

Regrettably, Bay Area Barns and Trails is unable to go to the effort and expense of purchasing and renovating this stable property without a guarantee that the property will always be accessible.

"This is a real fly in the ointment! BABTT can't go to the effort and expense of saving and renovating the stable property without a guarantee that the property will always be accessible. Their aim has been to preserve the property as a horse stable in perpetuity. Renewing a driveway easement every three years doesn't make it sound as though the City wants to make a long-term commitment, does it? Three years! It does seem that the City is being arbitrary. Putting this little park easement on the ballot in November seems a foolishly expensive procedure.

Is there not someone who can sort out the priorities and allow the stables to be restored as a rare Alum Rock Park neighborhood asset? The City is quite aware that the stables property owner has patiently waited to sell his land for more than two years now. He can't wait forever while the City makes BABTT jump through more hoops. Would the City really prefer to see a couple of "Trophy Mansions" built on this property overlooking Alum Rock Park?"

Copyright© 2004 New Neighborhood Voice by Judy Thompson. All rights reserved.  
Updated 4/30/04.

### BABTT GRANTS CONTINUED

#### SANTA CLARA COUNTY

**September 2004** . . . . . \$ 2,500  
Friends of Westwind Community Barn:  
Support replacement of eight barn doors.

#### SONOMA COUNTY

**February 2004** . . . . . \$1,501  
BCHC/North Bay: High line poles, water troughs and a manure bunker in Lake Sonoma Lone Rock Parking and Horse Staging Area

**March 2004** . . . . . \$2,420  
BCHC/North Bay: Horse Bridge across feeder creek on Main Horse Trail in Little Warm Springs Creek Drainage at Lake Sonoma

**June 2004** . . . . . \$1,800  
Land Paths/Willow Creek parking/staging area improvements accessing 5,000 acre timberland near Occidental, open by a "permit in exchange for stewardship" program managed by 'LandPaths.'

#### PRESERVATION/STEWARDSHIP

**2003** . . . . . \$ 12,157  
**2002** . . . . . \$ 9,465  
**2001** . . . . . \$ 8,356

#### EDUCATION, PRESERVATION AND STEWARDSHIP GRANTS

**1999/2000** . . . . . \$13,025  
**1999-2003** . . . . . \$43,003

### DIRECTORS AND ADVISORS

DEB ADAIR   San Jose
ALISTAIR BLEIFUSS   Bodega
NANCY COUPERUS   Los Altos Hills
BONNIE DAVIS   Fremont
JUDY ETHERIDGE   Sunol
CHIP HANKINS   Martinez & New Zealand!
KAREN JOHNSON   San Francisco
MAGGIE KELLY   San Jose
MORRIS OLDER   Orinda
DICK QUIGLEY   Livermore
ERIC SCHROEDER   Berkeley
WILLIAM SYMMES   San Francisco
MARILYN TERSTEGGE   Orinda
BARBARA WEITZ   Mill Valley
NANCY WHITE   San Jose





# BAY AREA BARNS AND TRAILS

EDUCATION • STEWARDSHIP • PRESERVATION

415-383-6283 • FAX 415-381-3809 • e-mail babtt@earthlink.net • www.bayareabarnsandtrails.org  
PO Box 2435 • Mill Valley, CA 94942-2435

NON-PROFIT ORG  
U.S. POSTAGE  
PAID  
MILL VALLEY, CA  
PERMIT NO. 68

*“Commitment is what really counts. You don't have to be a genius, just do it!”*

- KANDEE HAERTEL  
Equestrian Land Conservation Resource



TO:

address correction requested

## BAY AREA BARNS AND TRAILS

needs your support so that we can continue funding projects which help preserve natural areas, stables, farms, ranches, pastures, camping areas, and trails. Our financial aid has encouraged equestrians to raise matching funds for acquisition, restoration and maintenance projects throughout the Bay Area. As our all-volunteer land and trails trust becomes better known, we anticipate grant applications to increase significantly. Our ability to support these projects depends on our ability to obtain financial support from private foundations and public funding sources. The larger our membership base, the more qualified we will be to receive 'outside' funds. THAT'S WHERE YOU COME IN... WE REALLY NEED YOU!

## Your Support is Very Important!

We hope the enclosed membership envelope will inspire you to **JOIN UP**.

- |  |  |   |
|--|--|---|
| <input type="checkbox"/> \$10 Student/Senior | <input type="checkbox"/> \$50 Organization   | <input type="checkbox"/> \$500 Stewardship Advocate     |
| <input type="checkbox"/> \$20 Individual     | <input type="checkbox"/> \$100 Affiliate     | <input type="checkbox"/> \$1,000 Barn Raiser!           |
| <input type="checkbox"/> \$30 Family         | <input type="checkbox"/> \$250 Trail Partner | <input type="checkbox"/> \$2,500++ Open Lands Protector |
| <input type="checkbox"/> <b>New Member</b>   | <input type="checkbox"/> <b>Renewal</b>      | <input type="checkbox"/> <b>Gift Membership</b>         |

I'd like to include SOMETHING EXTRA to support BABTT's 'Stewardship, Capacity Building, Preservation or Acquisition Grants which benefit San Francisco Bay Area Equestrian 'Grassroots' Organizations.' \$ \_\_\_\_\_

**YOUR SUPPORT...Will help BAY AREA BARNS AND TRAILS Save Lands and Trails For Horses in the San Francisco Bay Area!** Total Amount \$ \_\_\_\_\_ Check # \_\_\_\_\_

Please make check payable to **Bay Area Barns & Trails** (sorry, no credit cards)

Name \_\_\_\_\_

Address \_\_\_\_\_

City \_\_\_\_\_ State \_\_\_\_\_ Zip \_\_\_\_\_

Phone(s) \_\_\_\_\_ FAX # \_\_\_\_\_ e-mail \_\_\_\_\_

All donations are tax-deductible to the full extent allowed by law.  
IRS Letter of Determination Available upon Request: # 68-0442986

THANK YOU!